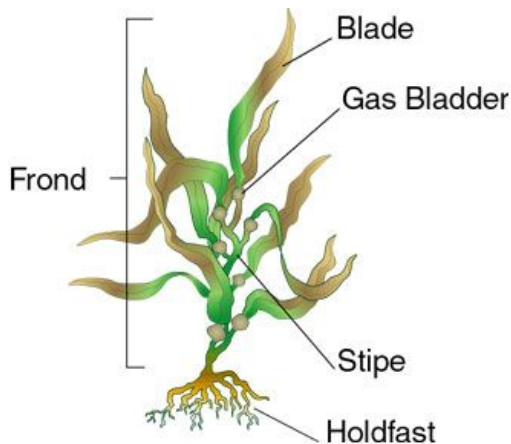


Kelp Forest Food Web

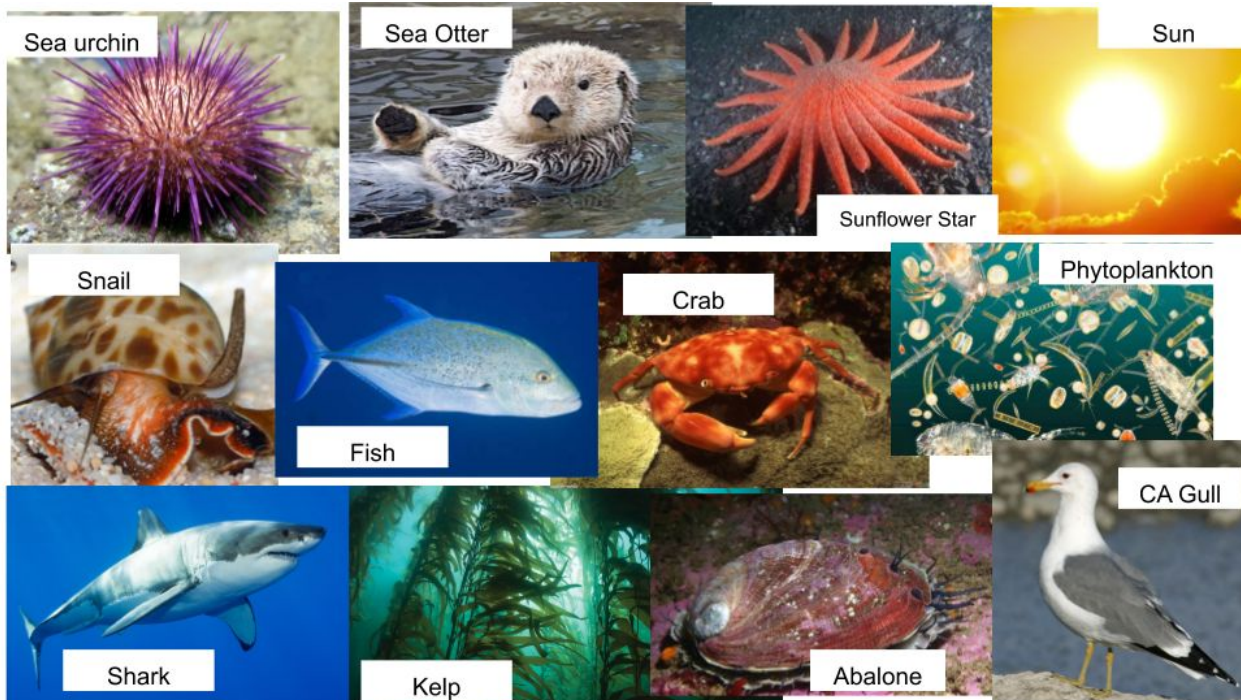
Kelp forests are one of the most diverse habitats on the planet. Many ocean animals depend on the kelp forest for food, protection, shelter, and even as a nursery for their young. Kelp is a type of algae that grows in the ocean. Although similar to plants, algae are in a completely separate category, or Kingdom. Click on the [link](#) and answer the following questions:

- 1) List three differences between algae and plants.
- 2) List three similarities between algae and plants.
- 3) Which parts of a kelp frond are similar to plants? Do they serve the same purpose/function? (refer to the picture below)



- 4) Which parts of a kelp frond are NOT found on plants? Why are these characteristics important to kelp and unnecessary to plants?

Food webs show us which organisms eat other organisms (predators and prey) so that they have energy to survive. Create a kelp forest food web with the animals below:



My Kelp Forest Food Web: