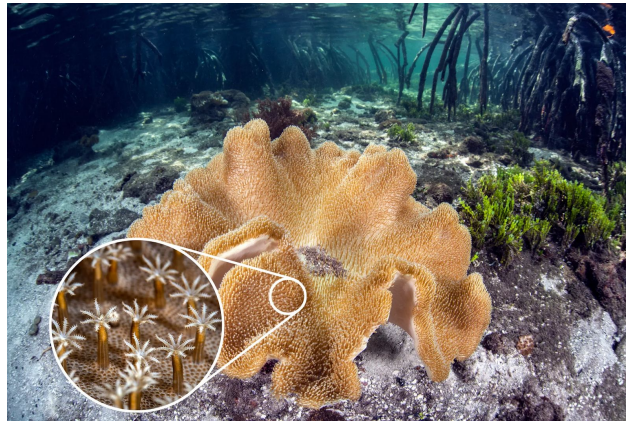


Life on the Reef

Coral reefs are prime real estate for a variety of marine organisms. Even though they look like plants or rock-like structures, corals are actually animals. A reef structure is made up of thousands of tiny coral polyps that look similar to sea anemones:



Click on the [link](#) and answer the following questions:

- 1) Where are coral reefs located?
- 2) How are coral reefs similar to kelp forests? How are they different?
- 3) How do corals get their energy to survive?
- 4) What are the three types of coral reefs and how are they different?

5) Why are coral reefs important to the ocean?

6) How has human activity affected the growth of coral reefs?

7) What is a 'symbiotic relationship'? Give an example of two animals that exhibit this relationship.

8) CHALLENGE QUESTION- Name the three different types of [symbiotic relationships](#) and give an example of each:

1.

2.

3.

Coral Gazette Activity

Directions:

- Download and print the *Coral Gazette Want Ads* and animal page
- Read the ads from the various coral reef residents
- Match the animals with their symbiotic partners
- Label each match with their type of symbiotic relationship