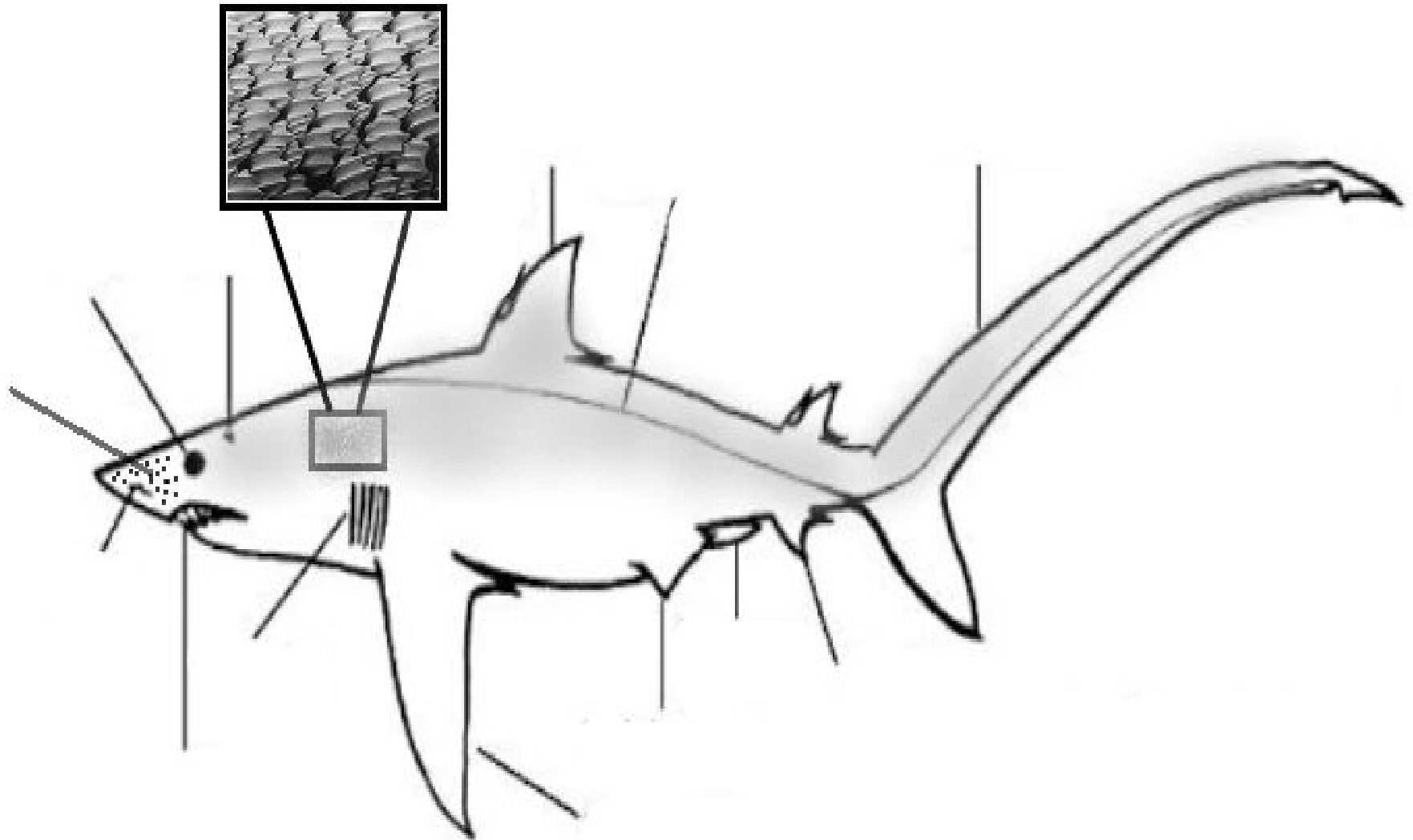


Shark Anatomy

Sharks have been around since dinosaurs walked the Earth. They have many adaptations that have made them apex predators and helped them survive long after dinosaurs became extinct. Label the shark diagram below with the body parts listed on the next page:



Click [here](#) to learn more about each body part and write their purpose/function next to each one:

Caudal fin-

Pectoral fins-

Dorsal fins-

Pelvic fins-

Anal fins-

Spiracles-

Mouth/teeth-

Gills-

Eyes-

Dermal denticles-

Lateral line-

Ampullae of Lorenzini-

Nares-

Claspers-

Cloaca-